

## ELECTRONIC ROLLER DOOR LOCK

Strong, secure and convenient are vital qualities of any lock. To date, roller door locks have failed to achieve the right balance of these features so compromises had to be made, but no longer. The YR10 combines the features found in traditional electronic locks, with the physical strength and function required to secure roller door of any shape, whatever size.

### Extreme Security

- Automatic deadbolting, 18mm diameter stainless steel bolt pin.
- 30,000N holding force (3,000Kg).
- Keyed access to manual override.

### Varied Voltage Input

- Input voltage from 12VDC – 24VDC.

### Complete Monitoring

- Door position switch.
- Bolt locked monitor.
- Bolt unlocked monitor.

### Low Current Consumption

- Less than 15mA in standby.
- Less than 300mA in operation.

### Integrated Access Control

- Selectable timed re-lock after 1 minute.
- Multiple attempts to lock and unlock.
- User selectable fail safe / fail secure operation.
- Anti-tamper and selectable instant auto-relock when desired.

### Versatile Installation

- Internal horizontal or vertical installation.

### Security System Compatible

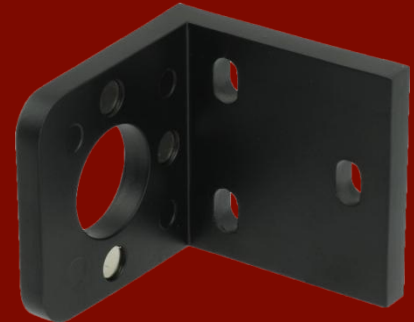
- Integrate with access control and alarm systems.

### Dimensions

- 152mmL x 89mmW x 77mmD.

### Approvals

- Cycle tested to 1000000 operations.



#### Corporate Office

Mediapolis  
71 Ayer Rajah Crescent #03-03  
Singapore 139951  
Phone: +65 62207970  
Fax: +65 62207656

#### R&D Centre

Unit E, 8 Piermark Drive  
Albany, Auckland 0632  
New Zealand  
Phone: +64 94473145  
Fax: +64 94473146

#### Sales Office

Unit 29, 1 Talavera Road  
North Ryde, NSW 2113  
Australia  
Phone: +61 288172800  
Fax: +61 288172811

#### DEALER DETAILS: