



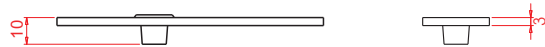
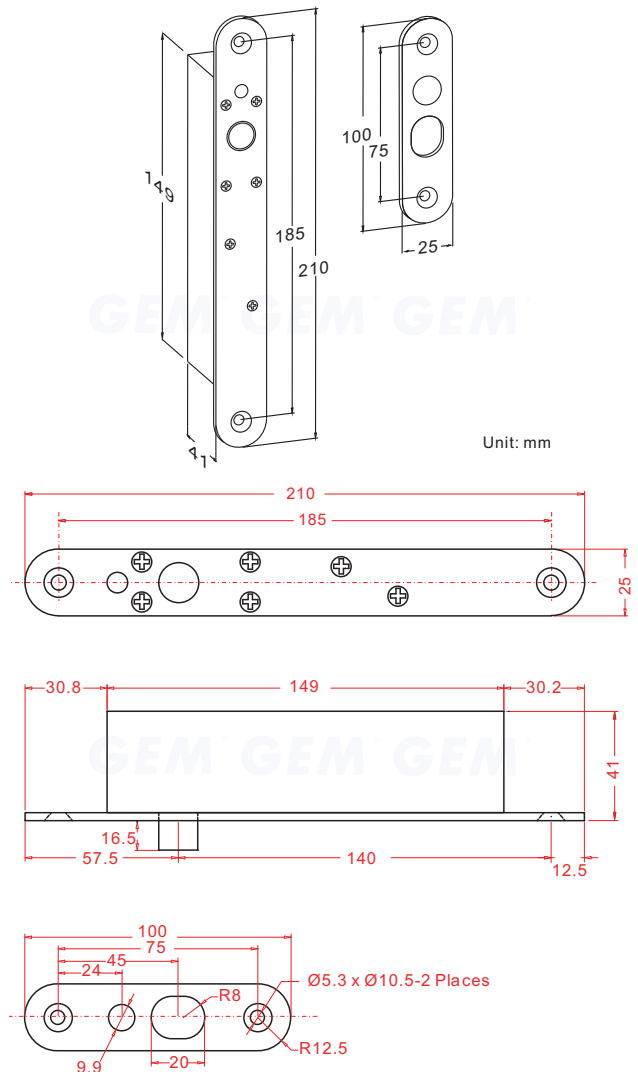
Statement

The EB180 electric dropbolt is very lightweight. The 25 mm-wide faceplate is designed for installation virtually on all types of doors and frames. The rectangular-shaped (EB185) and arc-shaped (EB180) faceplates are used to meet the different needs.

Specification

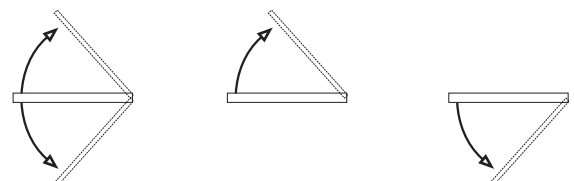
- Fail-Safe(Power to Lock)
- Operating Voltage: 12/24VDC
- Voltage tolerance: $\pm 10\%$
- Current Draw: Pull in: 0.9A/12VDC; 0.4A/24VDC
Holding: 0.15A/12VDC; 0.1A/24VDC
(at 20°C)
- Magnetic bolt status output:
(SPDT rated 3A/12VAC, 1.5A/250VAC)
- Operating Temperature: -10~+45°C
- Humidity: 0~95% non-condensing.
- Relock Time Delay : 1, 3, 6, 9 seconds
- Tested over 500000 cycles.
- Faceplate Material: stainless steel
- Net Weight : 0.6 Kg

Dimensions



Double Action Doors

EB180 Electric dropbolt is specially designed for use on double swinging doors. They can also be installed on both outswing and inswing doors.



Double swing doors

Outswing doors

Inswing doors

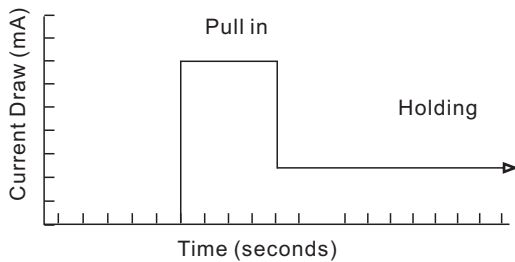
GIANNI INDUSTRIES, INC.

● Long life solenoids

The special designed solenoid aims for strength and long life. The solenoid is guaranteed 500,000 times of operation.

● Energy Saving Design

After the dropbolt is completely locked, the current draw changes from 0.9A to 0.15A to prolong its life.



● Horizontal or vertical installation

GEM's electric dropbolts can be installed either horizontally at the top or bottom of the door frame or vertically on the side of the door frame.

Fig. A Horizontal Installation (Frame Header)

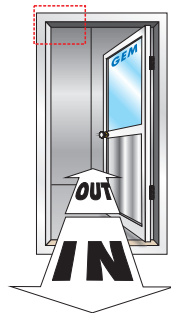
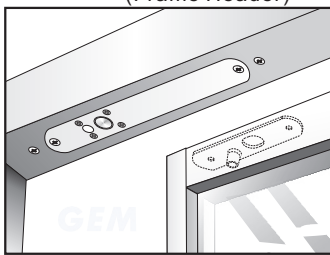
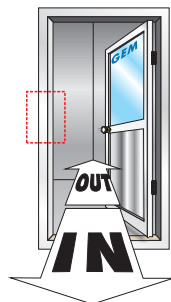
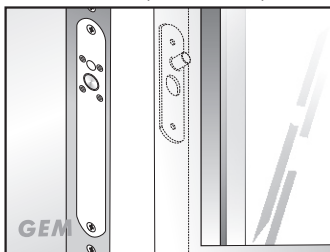
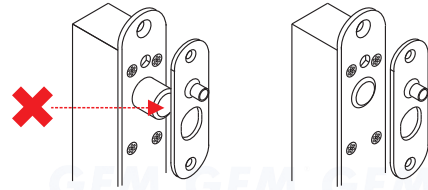


Fig. B Vertical Installation (Side Jamb)



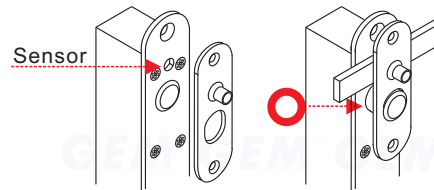
● Auto-detective circuitry

Unique self-detective logical circuitry is designed to retract the bolt until the door is properly closed.



● Vandal Resistant Circuitry

Once the bolt is completely locked, the reed sensor automatically disconnects from the bolt to avoid unauthorized access attempts.



● Relock Time Delay

Adjustable Time Delay of 1,3,6,9 seconds with 2 way DIP switch. (Default Value: 1 sec.)

Relock time setting

ON <input type="checkbox"/> 1 <input type="checkbox"/> 2	ON <input type="checkbox"/> 1 <input type="checkbox"/> 2	ON <input type="checkbox"/> 1 <input type="checkbox"/> 2	ON <input type="checkbox"/> 1 <input type="checkbox"/> 2
↑	↑	↑	↑
1 second	3 seconds	6 seconds	9 seconds

● Warranty

The product is warranted against defects in material and workmanship while used in normal service for a period of 1 year from the date of sale to the original customer. The GEM policy is one of continual development and improvement; therefore GEM reserves the right to change specifications without notice.

GIANNI INDUSTRIES, INC.